



# Preventing Costs, Supporting People: The Case for Investing in FASD

**Fetal alcohol spectrum disorders (FASD)** are a group of diagnosable medical conditions that can occur in individuals with exposure to alcohol before birth. Thankfully, early diagnosis and supports can protect against the costly adverse outcomes of this full-body, lifelong disability.



1 in 7 pregnancies are alcohol exposed <sup>6</sup>

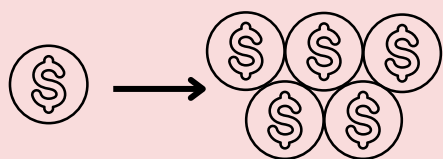
**Alcohol exposure prior to recognition of pregnancy can lead to FASD. FASDs are not 100% preventable, but many costly outcomes are.**



1 in 20 Americans estimated to have an FASD <sup>5</sup>

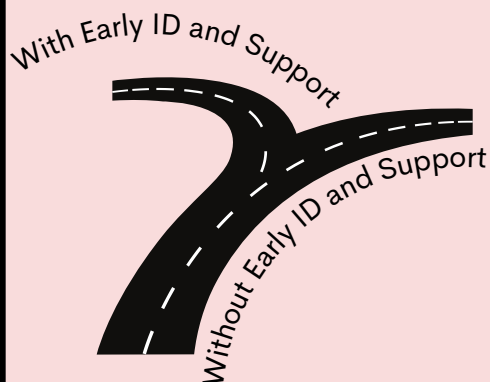
## Cost Savings at All Levels

### Pregnancy Support



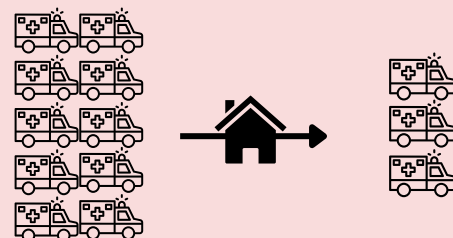
Alcohol screening & brief intervention during pregnancy returns \$4–\$5 for each \$1 invested <sup>4</sup>

### Early Identification and Support



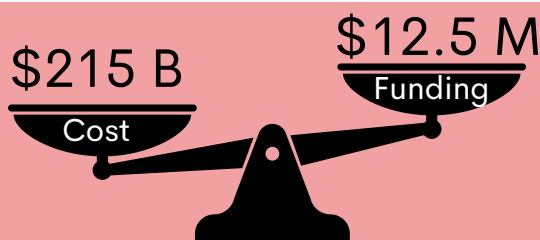
Early ID before age 6 = 2–4x less likely to experience costly adverse life outcomes <sup>20</sup>

### Long-term Interventions



Sustained community supports, like supportive housing programs, can decrease dependence on costly emergency services <sup>34</sup>

## The Price of Ignoring FASD

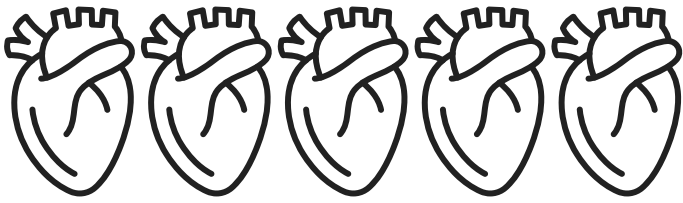


Annual Federal Funding for FASD Programs vs. Total U.S. Expenditures Associated with FASD <sup>2,3</sup>

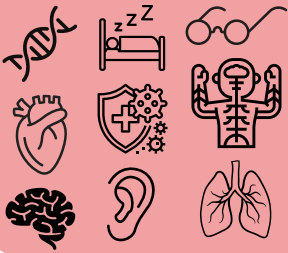


Annual cost between \$24–\$45K/person (amortized) <sup>1,2</sup>

## Lifelong Disability, Lifelong Costs



People with FASD are 5x more likely to have congenital heart defects<sup>12</sup>



428 conditions affecting body and brain systems are known to co-occur with FASD<sup>10</sup>

82% of people prenatally exposed to alcohol have at least one co-occurring diagnosis<sup>11</sup>



3–10x higher overall healthcare costs<sup>8,9</sup>



Education plans costing 2–3x more than general education<sup>21, 22</sup>



19x more likely to be incarcerated, costing \$35–\$60K/year/person<sup>25</sup>



People with FASD face unemployment at rates of up to 80%<sup>27</sup>

## Building a Stronger Nation Must Include FASD Support

“

It is reasonable to conclude that PCAP has the potential for significant cost savings. However, cost savings alone do not capture the societal benefits of keeping parents with their children, improving family well-being, and supporting mothers...

*Parent-Child Assistance Program Outcomes Suggest Sources of Cost Savings for Washington State, Produced by Casey Family Programs and the University of Washington for the University of Washington.*

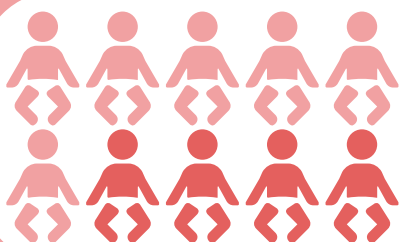
32

”



A study found that **86.5%** of youth with FASD in child welfare had **never been diagnosed** or had been **misdiagnosed**<sup>23</sup>

**Early diagnosis and FASD-informed supports** can improve outcomes throughout the lifespan and **reduce lifelong costs**



Universal alcohol screening and brief interventions in primary care reduce alcohol exposure 20–40%<sup>28</sup>

Want Citations or More Information? Scan Here

